

INDOTARA

www.indotara.co.id

Jakarta - Head Office
Graha Kencana Building
Lt. 10 Suite 10F
Jl. Raya Perjuangan No. 88
Kebon Jeruk, Jakarta Barat 11530
Phone : 021 - 5020 3030
Email : sales@indotara.co.id

Bandung Office
Wisma HSBC
Lt. 6 Suite B
Jalan Asia Afrika No.116,
Kota Bandung, Jawa Barat 40112
Phone : 022 - 310 30 800
Email : sales-bdg@indotara.co.id

Surabaya Office
Bumi Mandiri Tower I
Lantai 10 Suite 1008
JL. Jend.Basuki Rachmat 129-137,
Surabaya 60271
Phone : 031 - 3313 3333
Email : sales-sby@indotara.co.id

Medan Office
Kompleks MMTC WAREHOUSE
Blok C-7
Jl. Pasar V, Pancing,
Medan, Sumut 20371
Phone : 061 - 50 300 600
Email : sales-mdn@indotara.co.id



EXTRA WORK
EXTRA STRONG

BOMAC

TELEHANDLER

- BTH-40**
Telescopic Forklift
- BTC-110**
Telescopic Crane Loader
- BTHR4015**
Rotary Telescopic Forklift
- BTH-320**
32 ton Heavy Duty Telehandler
- BTHC-160/180**
16-18 ton Double Arm Inside
Container Operation Telehandler

BOMAC Manufacture is dedicating the research and development of material handling equipment and construction machinery. The current.

Products ranges cover:

1. material handling equipment including heavy duty forklift, crane forklift, rough terrain forklift, telescopic forklift , reach stacker.
2. construction machinery including wheel excavator, wheel loader.
3. Furnace-tending vehicle&Furnace-charging vehicle, which is customized for using in the metal smelting industry.

www.indotara.co.id



EXTRA WORK, EXTRA STRONG

BOMAC is dedicating the research and development of material handling equipment and construction machinery. the current products ranges cover:

1. material handling equipment including heavy duty forklift, crane forklift, rough terrain forklift, telescopic forklift, reach stacker.
2. Constuction machinery including wheel excavator, wheel loader.
3. Furnace-tending vehicle & Furnace-charging vehicle, which is customized for using in the metal smelting industry





Telescopic Crane Loader

BTC-110

FEATURES

BTC-110 telescopic crane loader, the chassis is front-wheel drive, rear-wheel steering, rigid suspension; adopt hydro-mechanical transmission with two-speed forward and two-speed reverse, full hydraulic power steering, and air-over-oil type drum brake; the working device is composed of the three-stage quadrilateral telescopic boom and boom quick change device and hook. This telescopic crane loader is not only applicable to lift the stone slabs in containers, but also can be used as a general crane, can be widely used in factory, dock, freight yard, forest farm, construction material, warehouse, logistics and other industries. It is a loading and unloading machine with wide adaptability and high efficiency.

Wide adaptability and high efficiency, integrate the functions of forklift, loaders and cranes
 excellent cross-country and extraordinary operation scope
 Enhanced work device design, stable quality





TELESCOPIC FORKLIFT: INTRODUCTION

BOMAC telescopic forklift is a new type of loading and unloading machine which was equipped with fork and side shifter, The machine is suitable for the lifting and stacking of cargoes, and can also be used in installation and maintenance of road lighting equipments and installation of various underground pipes (such as water pipes, gas pipes, etc.). And can be widely applied to factories, stations, docks, freight yard, post and telecommunications, forest, building materials warehouse and other places. It is a wide adaptability and high efficiency loading and unloading machine.

EXTRA WORK, EXTRA STRONG



PRODUCT
INTRODUCTION



EXTRA WORK, EXTRA STRONG

PRODUCT
DESCRIPTION



1. Using well-known brand diesel engine, strong-power, energy saving and environment protection, to meet the requirements of efficient operations

2. Double turbo hydraulic torque converter, stepless speed change. Single-lever control transmission system, with 2 speeds for forward and reverse gears, easier to operate

3. Use dual-pump combined hydraulic system, greatly reduce the fuel consumption and energy consumption

4. With full hydraulic coaxial flow amplification steering system, turning radius for rear steering axle is small, steering light and flexible

5. Using front wheel drive, rigid suspension, rear axle steering structure, can achieve four-wheel drive. Front axle spiral bevel gear and wheel side planetary wheel to reduce the speed and increase torque, have excellent load capacity

6. Using the integral frame, can provide good rigidity and strength, to ensure high reliability of this type of chassis.

7. Working device is two stage quadrilateral telescopic working arm, telescopic arm use large cross-section, high-strength quadrilateral structure.

8. This model standard with forks, bucket, extension forks and aerial work platform are optional. Standard with quick hitch, can choose fork positional and side-shifter.

9. The use of adjustable direction machine, air seat, joystick control valve control distribution valve and work device oil, light and flexible operation, sitting more comfortable.

10. Using maintenance-free battery, cab match with fan, radio, air conditioning, more comfortable and reliable.

11. The whole shape of the atmosphere, beautiful and smooth; luxury wide view cabin, low noise and good sealing.

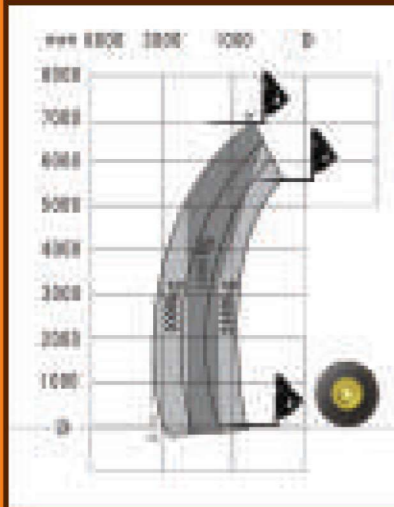
12. This series models standard with electronic handbrake, compared to the soft-axis handbrake, have a substantial increase in the operability, aesthetics and sensitivity.

13. This series models standard with electronic off-axle function, compared to the manual soft shaft off-bridge mechanism, the operation is more convenient and concise, the performance also been greatly improved, can achieve two-wheel drive and four-wheel drive switch, can better adapt to different working conditions and reduce the degree of tire wear, protect the tiers better.

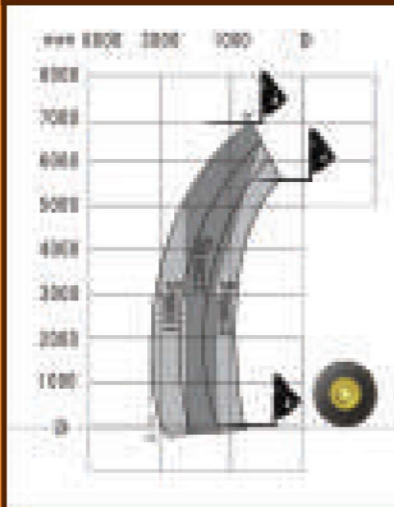
14. Parts are the localization, standardization, cost-effective, easy to purchase and daily maintenance.



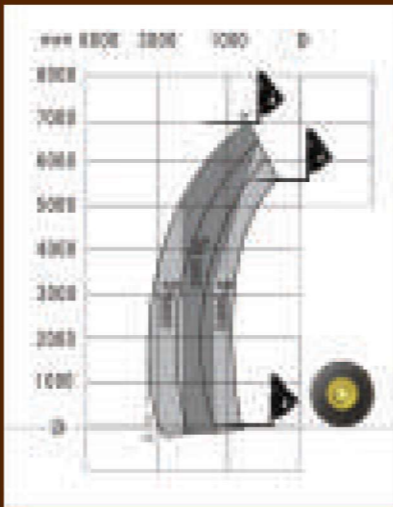
BTH25-4 TELESCOPIC ARM AND CAR LIFT PERFORMANCE



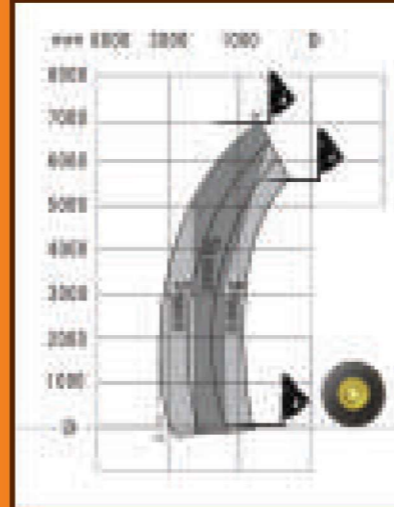
BTH30-4 TELESCOPIC ARM AND CAR LIFT PERFORMANCE



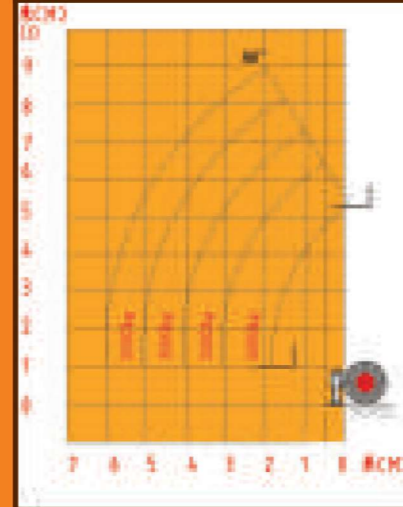
BTH35-4 TELESCOPIC ARM AND CAR LIFT PERFORMANCE



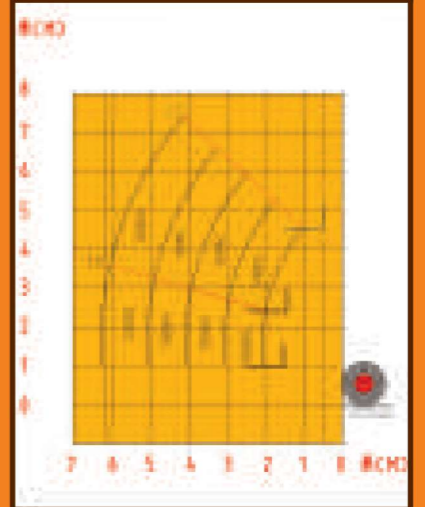
BTH40-4 TELESCOPIC ARM AND CAR LIFT PERFORMANCE



BTH-50H TELESCOPIC ARM AND CAR LIFT PERFORMANCE

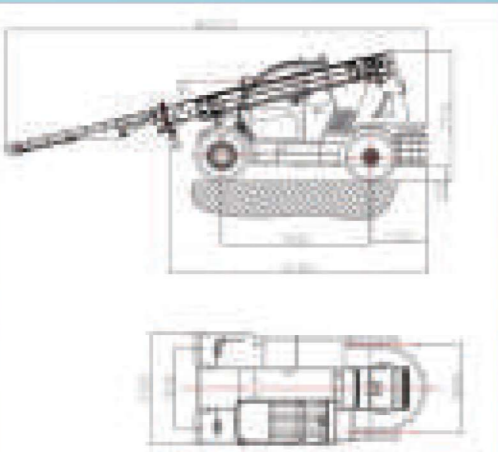


BTH-502 TELESCOPIC ARM AND CAR LIFT PERFORMANCE



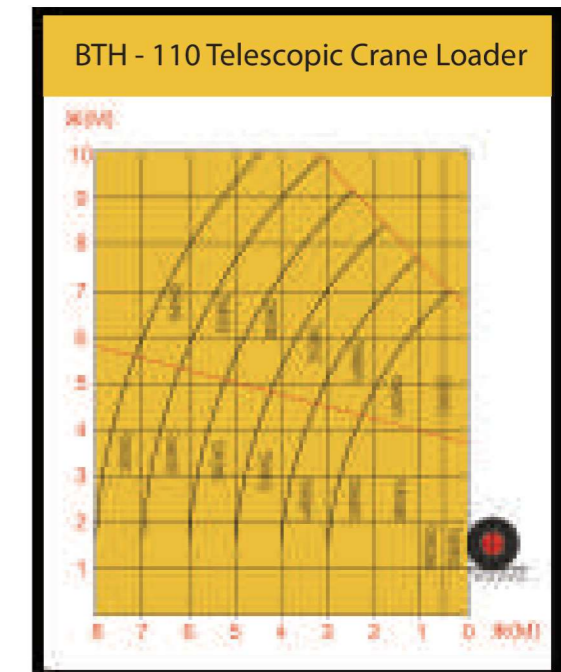
Picture 1-1 Overall Dimension

Code	Description	Parameter (mm)
A	Height	2485
B	Width	2390
C	Length	4865
D	Cab inside height	780
E	Wheel tread	1870
F	Wheelbase	2700
G	Min. ground clearance	400

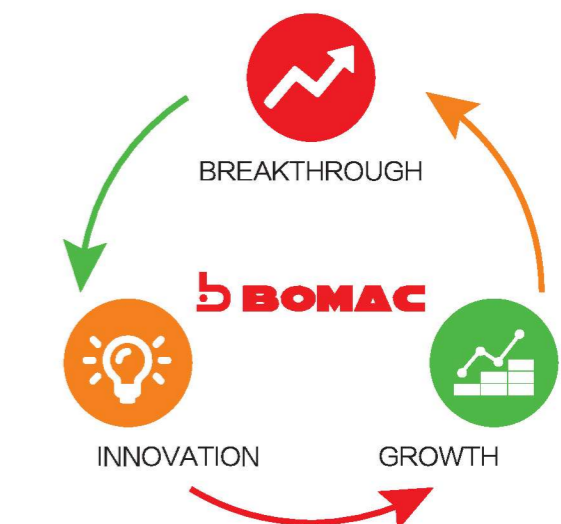


Technical Parameter									
Items		Unit	Deviation allowed	BTH-25 -4	BTH-30 -4	BTH-35 -4	BTH-40 -4	BTH-50 -2	BTH-50 H
Basic parameter	Rated load	kg	-	2500	3000	3500	4000	5000	5000
	Load center	mm	-	500	500	500	500	500	500
	Load capacity @ max. Forward reach	kg	-	1000	1250	1550	1800	1500	2000
	Basic boom max. Lifting height	mm	± 1.5%	4850	4850	4850	4850	4500	5300
	Max. Lifting height	mm	± 1.5%	7000	7000	7000	7000	7300	8800
	Max. Horizontal reach	mm	± 1.5%	3350	3350	3350	3350	5700	5470
	Min. Horizontal reach	mm	± 1.5%	930	930	930	930	1500	1270
	Min. Ground clearance	mm	± 1.5%	400	400	400	400	310	310
	Min. Turning radius (outer tyre center)	mm	≤ 105%	6200	6200	6200	6200	6800	6800
	Angle	Boom frame upward angle	°	± 1.0	60	60	60	60	43
Boom frame downward angle		°	± 1.0	-11	-11	-11	-11	-14	-12
Operating weight		kg	± 5%	8200	8600	9000	9440	13000	13000
Overall dimension	Length (with fork)	mm	± 2%	5730	5730	5730	5730	6288	5900
	Width	mm	± 2%	2390	2390	2390	2390	2300	2350
	Height	mm	± 2%	2485	2485	2485	2485	2715	2655
	Wheel tread	mm	± 1%	1870	1870	1870	1870	1638/1845	1638/1845
	Wheel base	mm	± 1%	2700	2700	2700	2700	2988	2988
Rated power / Rated turning speed		kW/r/min	-	60/2000	60/2000	60/2000	60/2000	74/2200	74/2200
Driving system	Max. Travelling speed (unloaded)	km/h	± 10%	30	30	30	30	25	25
	Gradeability	%	-	≥ 30%	≥ 30%	≥ 30%	≥ 30%	≥ 20%	≥ 20%
Tyre	Front (2 pcs)	-	-	16/70-24	16/70-24	16/70-24	16/70-24	11.00-20	11.00-20
	Rear (2 pcs)	-	-	10.00-20-16	10.00-20-16	10.00-20-16	10.00-20-16	9.00-20	9.00-20
Engine	Cummins	National 2		4BTA3.9-C80II	4BTA3.9-C80II	4BTA3.9-C80II	4BTA3.9-C80II	4BTA3.9-C100II	4BTA3.9-C100II
		National 3		QSB3.9-C80	QSB3.9-C80	QSB3.9-C80	QSB3.9-C80	QSB3.9-C100	QSB3.9-C100

BTC - 110 Telescopic Crane Loader		
Item	Parameter	Remark
Rated load, kg	≤ 11000	
Operating weight kg	13000	
Main hook max. lifting height, mm	7605	(from main hook to the ground)
Max. lifting height with full extended boom, mm	10300	(front hook)
Wheel base, mm	2988	
Front wheel tread, mm	1638	
Rear wheel tread, mm	1845	
Min. ground clearance, mm	310	
Overall length, mm	5288	without hook
Overall width, mm	2350	
Overall height, mm	2715	
Overall height of cab, mm	2400	
Rear overhang length, mm	1055	
Main hook max. horizontal reach, mm	4800	(Horizontal)
Max. Horizontal reach with full extended boom, mm	7900	(Horizontal)
Tipping angle of hook, up/down	22° / 24°	
Tipping angle of big arm, up/down	-14° / 43°	
Min. turning radius, mm	6800	
Max. gradeability, (°)	≥ 20%	
Max. travelling speed, Km/h	25	
Front wheel	11.00-20	
Rear wheel	9.00-20	



BTC - 110 Lift Load Curve



Note: the above data are subject to change without prior notice.

BTHR4015

Rotary telescopic arm forklift

BTHR4015 is a multi-purpose rough terrain forklift. It is creative rotate telehandler which is suitable for construction site and some industry area. BTHR4015 adopts diesel engine, hydrostatic transmission, pilot control, 4WD full wheels driving, rear wheel steering with outrigger, hydraulic stabilizer for boom placing, stretching and withdrawing, lifting height 15m, rated load capacity 4tons, 360 degree rotate chassis, Max horizontal reach 10500mm (front end of front wheel to load center).It can be used as telescopic forklift loader crane loader or working platform.

BOMAC

EXTRA WORK, EXTRA STRONG





BTHR4015 MAIN APPLICATION

Channel application: hoisting and lagging jack. Aerial work platform with Arch manipulator, Arch manipulator can grab the arch firmly, the stretching and withdrawing of the telehandler boom can realize the horizontal and height adjustment, at the same time, the swinging hydraulic cylinder of the arch manipulator can realize the accurate position of the work piece. Construction site: unloading and short-distance transportation of construction material. Place the construction material directly to the working site, or handle the material to truck crane, tower crane, handling all kinds of material at the working site or clearing the working site. Use the aerial work platform for aerial installation, use glass suckers to install glass curtain wall Port, Industrial company: load and unload the pallet cargo to container, unload stack and short-distance transport for all kinds of container cargo Agricultural and animal husbandry : transport of straw bundle and forage feed, clear the rubbish Municipal and fire-fighting: use aerial work platform for municipal operation, fire-fighting and emergency action.

EXTRA WORK, EXTRA STRONG



BTHR4015**PRODUCTS DESCRIPTION**

1, BTHR4015 is a multi-purposed telescopic forklift with rough terrain ability. It is with three section boom with 360 degree rotate chassis, the max. Lifting height is 15m, max. Load capacity is 4000kg, max. Horizontal reach is 10500mm

2, Equipped with Cummins turbo-charged engine with common rail fuel system, the machine is powerful, energy-saving and environment-friendly. It can meet the high-efficient operation requirement

3, The power system is equipped with air-air intercooler, which reduces the inlet temperature of the engine, improve the volume of air inlet, increases the power of the engine

4, Equipped with hydro-static transmission, the machine is with good self-adaptability and operation ability. All of the hydraulic pump, main valve, hydraulic motor, rotary motor, central rotary joint, Hydraulic cylinder, pilot control valve adopts well-known brand.

5, Adopts full hydraulic load sensing steering system, the turning radius of rear axle is small, the steering of portable and flexible.

6, Hydraulic system is equipped with oil-return radiator and back pressure protection device, which guarantee the heat-balance for the machine

7, Adopts hydraulic balance valve control, which limit the speed of boom extension and withdrawing, preventing risk of heavy cargo out of control when descending, front & rear out trigger adopts hydraulic lock control, guarantee the out trigger can be locked reliably, preventing the failure of out trigger during the heavy load operation, or the risk of falling during traveling

8, Diesel engine is placed on the lower chassis, the slewing platform can rotate 360 degree. The oil tube, electrical wire, and gas tube was connected through central swivel joint which realize the seamless connection up and down

9, Use front wheel drive, rigid suspension, rear axle steering structure. Front spiral bevel gear and wheel rim planet reduce the speed and increase torque and the load capacity, prolong the lifespan. The rear axle adopts transversal hydraulic steering structure, the structure of steering axle is compact, with steering angle of 40°, which reduce the steering resistance and the wearing of tires, increases the traveling smoothness

10, Adopts L-shape swing platform, heavy slewing bearing with features of high support capacity, and resists the impact of outside intense impact.

11, Adopts long wheel base, box-type chassis, which provide good rigidity and strength, and guarantee the high reliability of the chassis of telehandler

12, The operation device is 3-section box-type working boom, the telescopic boom use large section, high intense box-type structure, which meet the heavy load requirement

13, Adopts cascade high intense fork, which is more strong, more durable in prolong the lifespan

14, Adopts four clamp-disc brake, with rear gas storage tank, 18 times brake air pressure augmentation ratio, which features with better radiation, more reliable and safe brake

15, Adopts sectional deep heavy duty forklift tires, the rear axle can swing around the center, which features with good traction performance and passage capacity

16, Adopts adjustable steering wheel, aero seat, pilot control & distribution valve and working device oil tube, which features with portable and flexible control, more comfortable seating

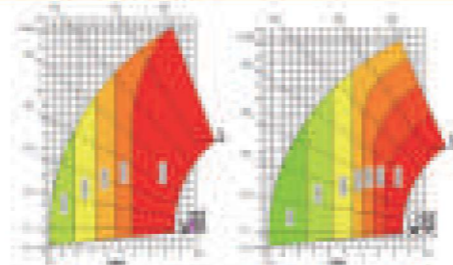
17, Adopts domestic high quality electrical components, maintenance-free battery, electric wire adopts anti flame retardant material, which features with high working reliability and durability, the cab equipped with fan, radio, warm & cooling A/C, reversing buzzer.

18, The multi-purposed LCD monitor supervise the working condition in all aspects including turning speed, oil pressure, oil temperature, water temperature, water level Etc.

19, The whole machine appearance is exquisite, graceful and smooth, the luxurious wide view cab is equipped with sunroof, which features with low noise, good sealing and convenient for all around observation for the driver

20, The standard truck is equipped with fork, aerial working platform and arch manipulator, which is widely used in tunnel, port, construction site, industrial company, agricultural and animal husbandry, municipal fire-fighting for the work of load and unloading, stacking, short-distance transmutation and aerial working

PRODUCT PARAMETER CONFIGURATION



BTHR4015 Load chart (reference)

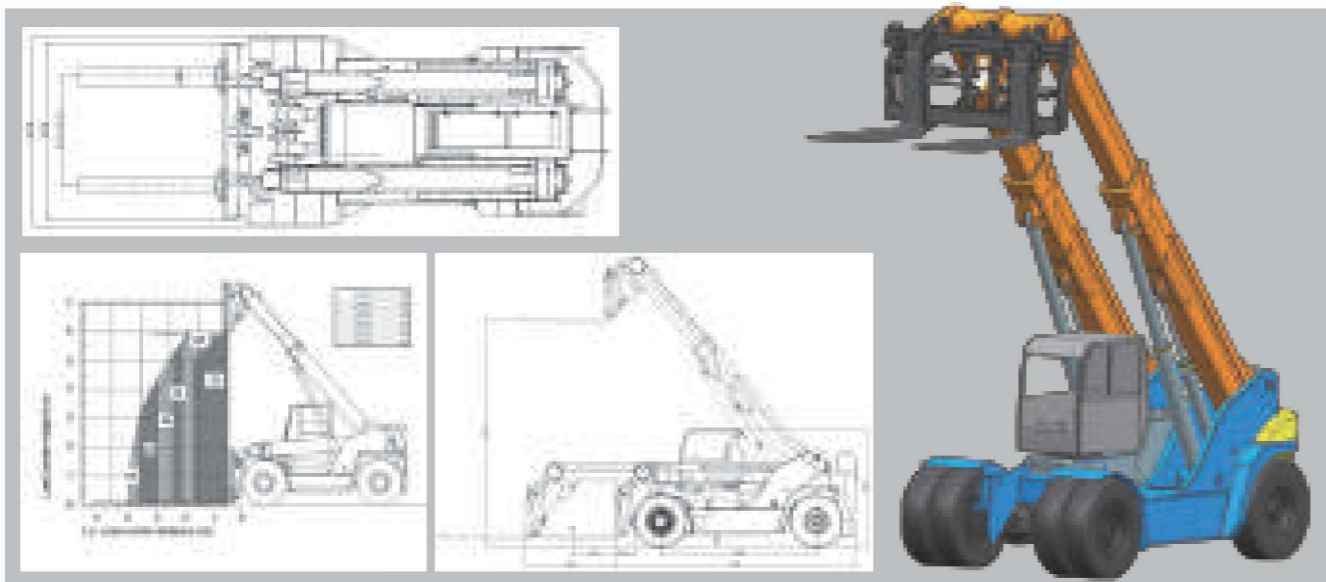
MAIN SPECIFICATION BTHR4015

	PERFORMANCE	TECHNICAL DATA
Basic parameter	Max. Lifting height (with out trigger)	15m
	Rated load capacity (lifting)	4000kg
	Max. Horizontal reach	10.5m
	Rated load @ Max. Horizontal reach (with outrigger)	800kg
	Load center	500mm
	Operating weight (unloaded with fork)	16000 kg
	Max. Travailing speed (km/hour)	28 km/h
	Swinging speed	3 rpm(1500rpm)
Transmission system	Transmission type	Hydraulic static transmission
	Hydraulic (high speed / low speed)	2 / 2
	Transmission gears	2 (2F/2R)
	Gradeability	30%
	Traction force	80kN
System capacity	Hydraulic oil tank capacity	300L
	Fuel tank capacity	200L
Engine	Model	Cummins QSB3.9-C125-30
	Rated power	93kW/2200r/min
	Torque	480 Nm 1350r/min
	Fuel type	(Diesel)
	Emission standard	(National)
	Cooling	(Water cooled)
Hydraulic system	Pressure	28 MPa
	flow	300 L/min

	PERFORMANCE	TECHNICAL DATA
Steering system	Steering gear type	load sensing full hydraulic steering
	Pressure	16 MPa
	Rear axle steering type	Transverse hydraulic cylinder steering structure
	Steering angle	40°
Brake type	Service brake	(Clamp-disc brake)
	Brake air pressure	0.684-0.785 MPa
	Parking brake	(Air push drum brake)
Main dimension	Overall height	3513mm
	Overall width	2550mm
	Overall length(with fork)	7638mm
	Wheel base	2800mm
	Front wheel tread	2030mm
	Rear wheel tread	2030mm
	Ground clearance (out trigger)	340mm
Turning radius (out side)	≥5800mm	
Operating position	Central	
Seating type	Car type	
Aerial working platform	Length*width*height	1200×800×970mm
Out trigger type	Hydraulic out trigger No.	2 (2F/2R)
Working boom	Telescopic working boom	(3-setion)
Fork	Length*width*thickness	1000×122×50mm
	Max. Distance between two forks	710mm
	Front/Rear tilt degree	12°/ 120°
Standard tire(inflatable)	(Front/Rear) Wheel Number	2/2
	(Front/Rear) driving wheel Number	2/0
	(Front/Rear) tire dimension	45×16-20 (36PR)

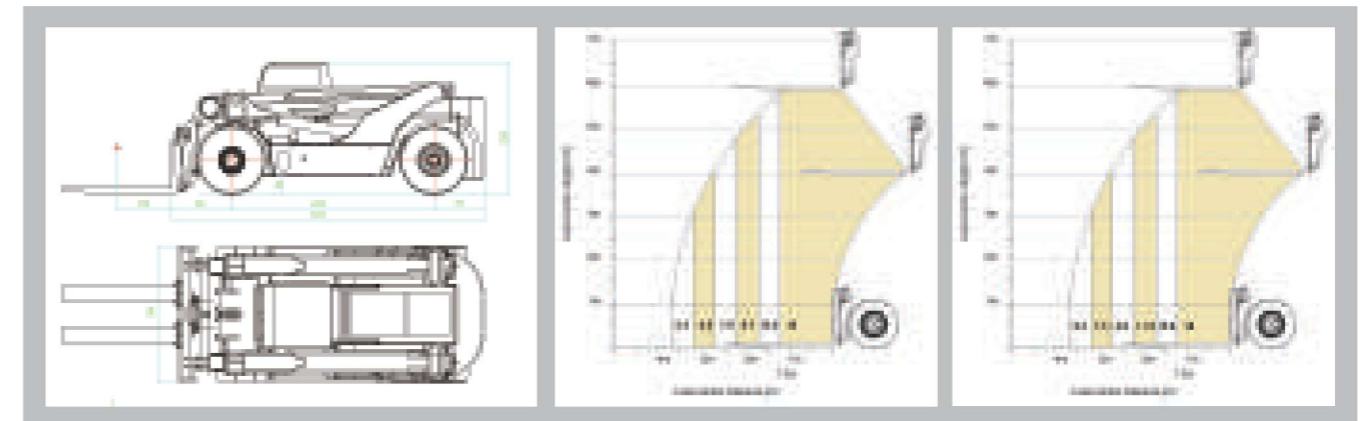
Note:the above date are subject to change without prior notice.

32 ton Heavy Duty Telehandler



Model		BTH320
Lifting Feature	Lifting capacity(kg)	32,000
	Weight(without attachments)(kg)	44,000
	Axle load Front/behind(empty)	17600/26400
	Axle Load Front/behind(full)	67782/8218
	Load center(mm)	1,200
	overhang (mm)	1,300
	Lifting height(mm)	6,700
	Max.horizontal reach (mm)	3,000
	Capacity (kg)	18,000
	Lifting speed (mm/s)	200
(km/h)Driving speed		28
Dimension	Length (without fork) (mm)	7,442
	Width (mm)	3,316
	Height (min.) (mm)	3,300
	Wheel base (mm)	5,000
	Front wheel tread (mm)	2,354
	Rear wheel tread (mm)	2,483
	Ground clearance	360
	Fork dimension WxHxL(mm)	2400x320x110
Turning radius (mm)	7,260	
Engine	Option one	BTW10-G240 178kW@2200r/min
	Option two	QSC8.3-C260 191kW@2200r/min
	Emission standard	National 3
Transmission	Model	Hydraulic transmission
	Gearshift type	Electronic hydraulic gear shift
Drive Axle	Model	BOMAC
	Service brake	Wet butterfly or clamp disc.
	Parking brake	Clamp disc.(spring)
Tyres	Front	4x16.00-25/32PR
	Rear	2x16.00-25/32PR

16-18 ton Double Arm Inside Container Operation Telehandler



Specifications

Manufacturer		BOMAC	
Model		BTHC160	BTHC180
Lifting properties	Load capacity	16,000 kg	18,000 kg
	Load centre	1,200mm	
	Lifting height	6,000 mm	
Dimensions	Reach	2,500 mm	
	Lifting speed	0.26 m/s	
	Overall length	7,030 mm	7,150 mm
	Length to fork face	5,630 mm	5,750 mm
	Overall width	2,160 mm	
	Overall height (min)	2,265 mm	
	Wheelbase	4,000 mm	
	Ground clearance	150 mm	
Service weight with standard fork		22,000 kg	23,200 kg
Turning radius		5,530 mm	5,650 mm
Standard forks LxWxH		2,400x200x100 mm	
Engine	Manufacturer	Cummins	
	Model	QSB6.7-C190	
	Power	142kW@2200 r/min	
	No. of cylinders	6	
	Emission	EU Stage IIIA	
	Manufacturer	BOMAC	
	Type	Torque converter	
	Model	BTY-15	
	Shifting	Automatic power shift	
	No. Of gears (fwd/rev)	3/3	
Transmission	Manufacturer	BOMAC	
	Service brake	Hydraulic caliper disc	
Travel speed		28 km/h	
Tyres	Front	4x12.00-20 Driving	
	Rear	2x12.00-20 Steering	

Note:the above data are subject to change without prior notice.